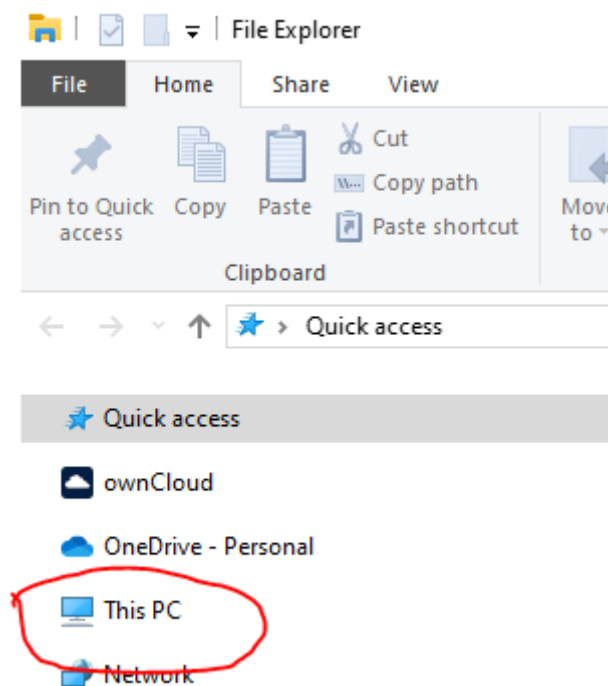


Checking the name of your computer: do I have a MEB computer or a KI computer?

Sometimes when the IT support tries to help you solve a problem, they need to know if you have a computer from MEB or KI ITA. If you do not know, here are instructions on how to find out:

Option 1

Open Explorer (utforskaren) outside VDI and right click "This pc: properties"



Now you can see the name of your unit: If it starts with KI, then your computer was provided from the central IT department, i.e. a KI computer. If it starts with MEB, then it was provided by MEB. See two examples below:

167 GB av 477 GB används

Intel(R) Graphics

Hastighet: 5600 MT/s

1.70 GHz

KIRC-5CG5132LR9

HP EliteBook 840 14 inch G11 Notebook PC

Byt namn på datorn

Enhetsspecifikationer

Kopiera

Enhetsnamn

KIRC-5CG5132LR9

Processor

Intel(R) Core(TM) Ultra 7 155U (1.70 GHz)

Installerat RAM-minne

32,0 GB (31,5 GB går att använda)

Enhets-ID

4DEB9F5B-3683-415C-A192-709ED9708370

Produkt-ID

00330-80000-00000-AA698

Systemtyp

64-bitars operativsystem, x64-baserad processor

Penna och pekskärm

Penn- eller tryckinmatning är inte tillgängligt för den här bildskärmen

Vanliga frågor och svar

Kör jag den senaste versionen av Windows-operativsystemet? Vilken är den senaste Windows-versionen?

Settings

Home

Find a setting

System

Display

Sound

Notifications & actions

Focus assist

Power & sleep

Storage

Tablet

Multi-tasking

Projecting to this PC

Shared experiences

System Components

Clipboard

Remote Desktop

Optional features

About

Your PC is being monitored and protected.

See details in Windows Security

Installed RAM

32,0 GB

Speed: 5600 MHz

Processor

13th Gen Intel(R) Core(TM) i9-13900K

3.00 GHz

Graphics Card

128 MB

Intel(R) UHD Graphics 770

Storage

954 GB

308 GB of 954 GB used

D0716MEB

HP Z2 Tower G9 Workstation Desktop PC

Rename this PC

Device Specifications

Copy

Device Name

D0716MEB

Full device name

D0716MEB.meb.ki.se

Processor

13th Gen Intel(R) Core(TM) i9-13900K 3.00 GHz

Installed RAM

32,0 GB (31,7 GB usable)

Graphics Card

Intel(R) UHD Graphics 770 (128 MB)

Storage

954 GB SSD SAMSUNG MZVL21T0HCLR-00BH1

Device ID

9D06B303-6400-4073-80D5-F918F67778C2

Related settings

Change the product key or upgrade your edition of Windows

Read the Microsoft Software Licence Terms

BitLocker settings

Device Manager

Remote desktop

System protection

Advanced system settings

Rename this PC (advanced)

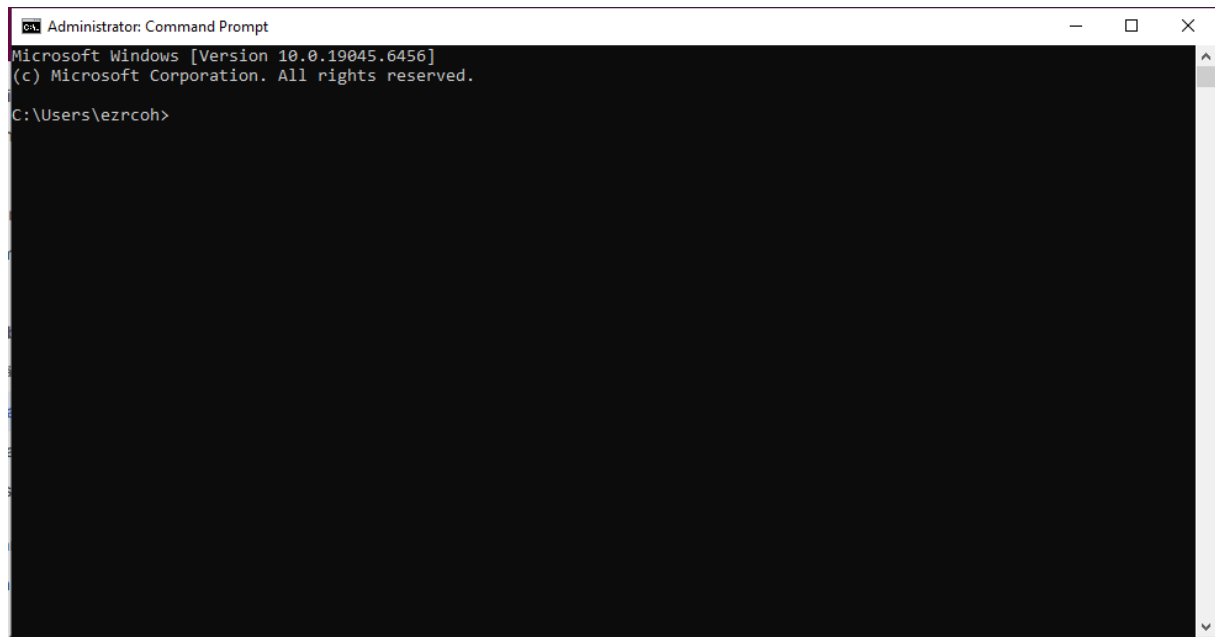
Help from the web

Finding out how many cores my processor has

Checking multiple Languages support

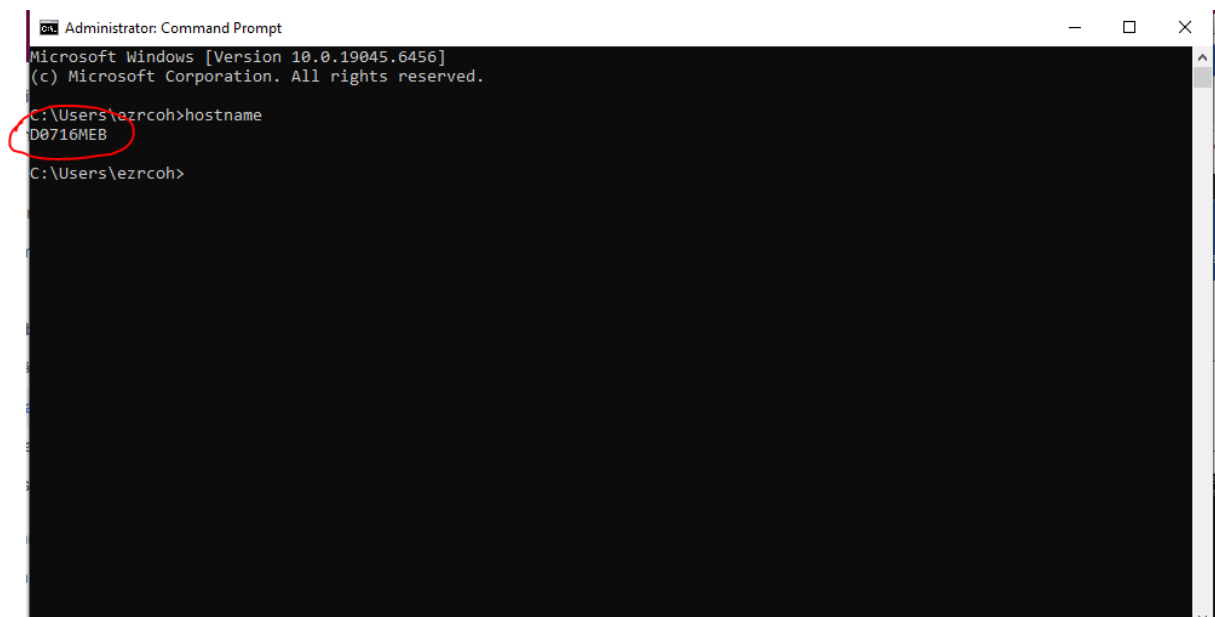
Option 2

Use cmd



```
Administrator: Command Prompt
Microsoft Windows [Version 10.0.19045.6456]
(c) Microsoft Corporation. All rights reserved.
C:\Users\ezrcnh>
```

Type hostname and press enter



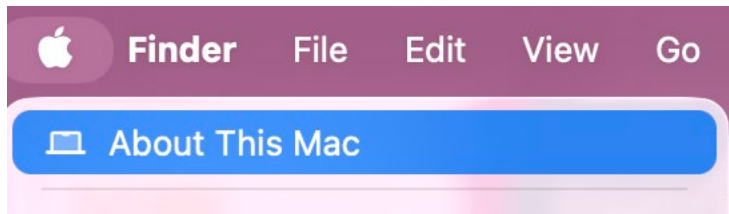
```
Administrator: Command Prompt
Microsoft Windows [Version 10.0.19045.6456]
(c) Microsoft Corporation. All rights reserved.
C:\Users\ezrcnh>hostname
D0716MEB
C:\Users\ezrcnh>
```

If the text includes xxxxxMEB, then you have a MEB computer, if not it is a KI computer.

Now you can tell IT support so they can help you in the most efficient way.

Determining what kind of MAC you have

1. Click on the Apple-symbol at the top left and choose “About this Mac”.



2. Click on “More info”



3. Now you can see the computer name to the right. If you have a KI-MAC the name starts with KI and if it's a MEB-MAC it starts with C8.

